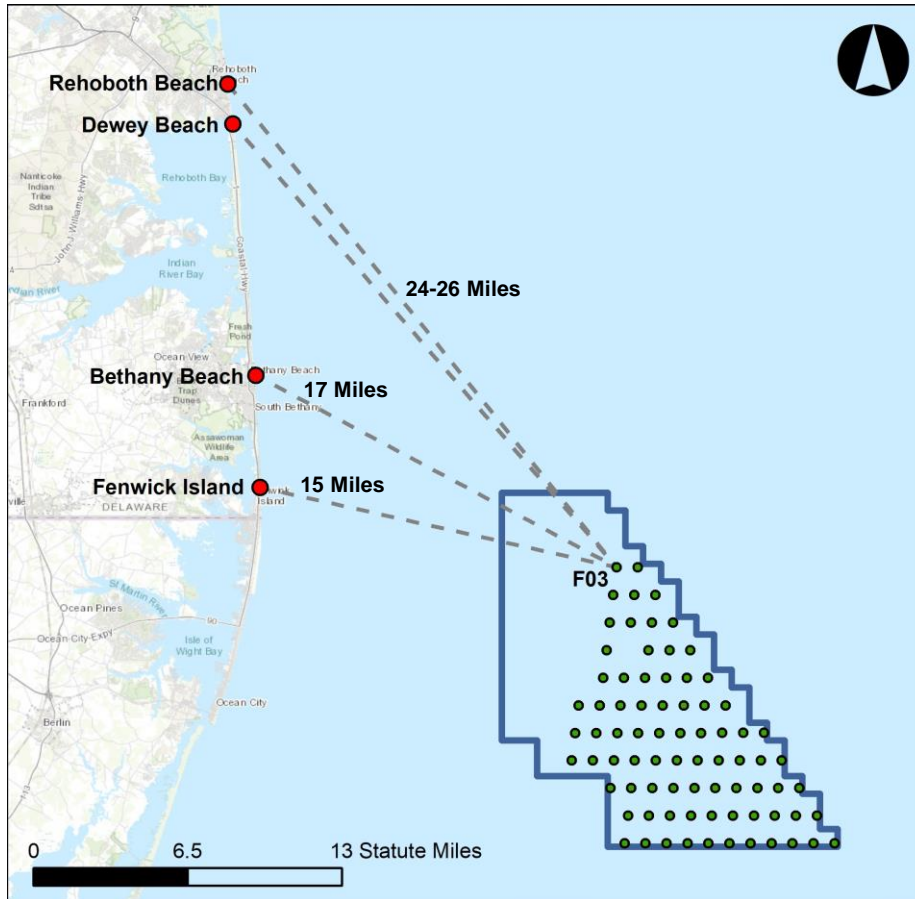




**Rehoboth – Dewey Chamber
September 14, 2022**

US Wind Projects

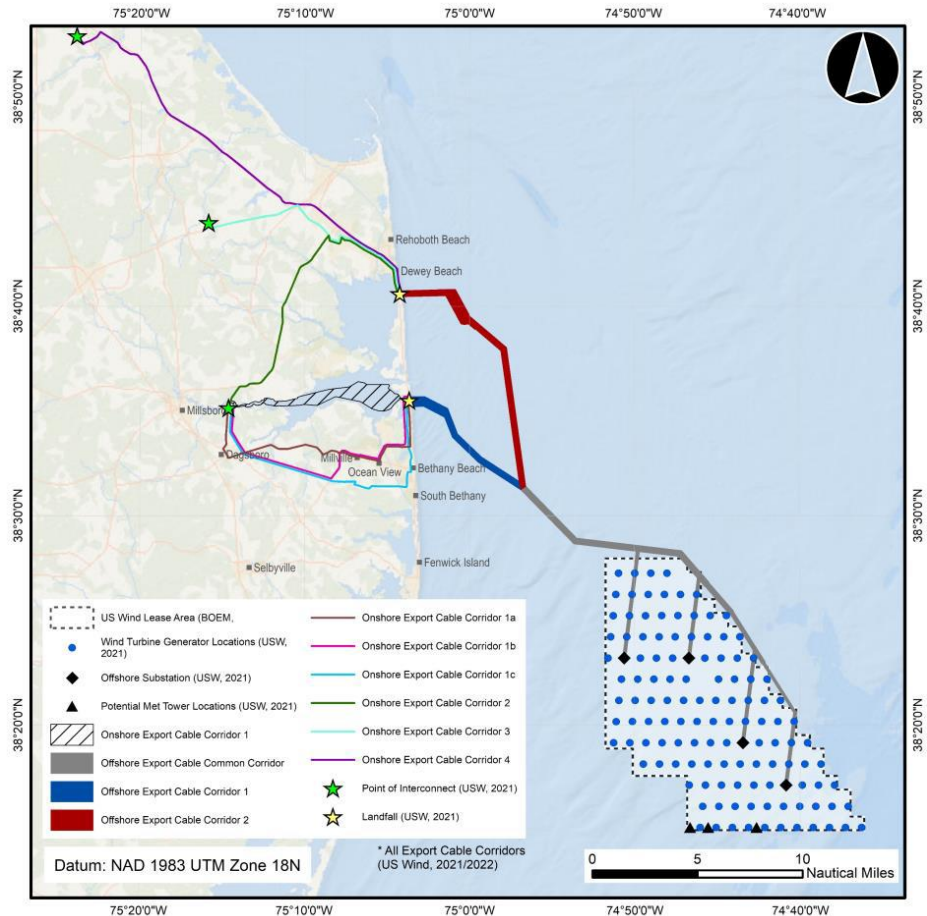


- 80,000-acre lease area, 12–27 statute miles from OC, MD
- Combined projects will deliver ~1,100 MW of clean energy to the grid. **Will power ~340,000 area homes.**
- Deliver with 76 turbines, 3 offshore substations (OSSs). **Scour protection will cover less than 1% of lease area**
- Closest turbine 24 miles from Dewey, 26.2 miles from Rehoboth

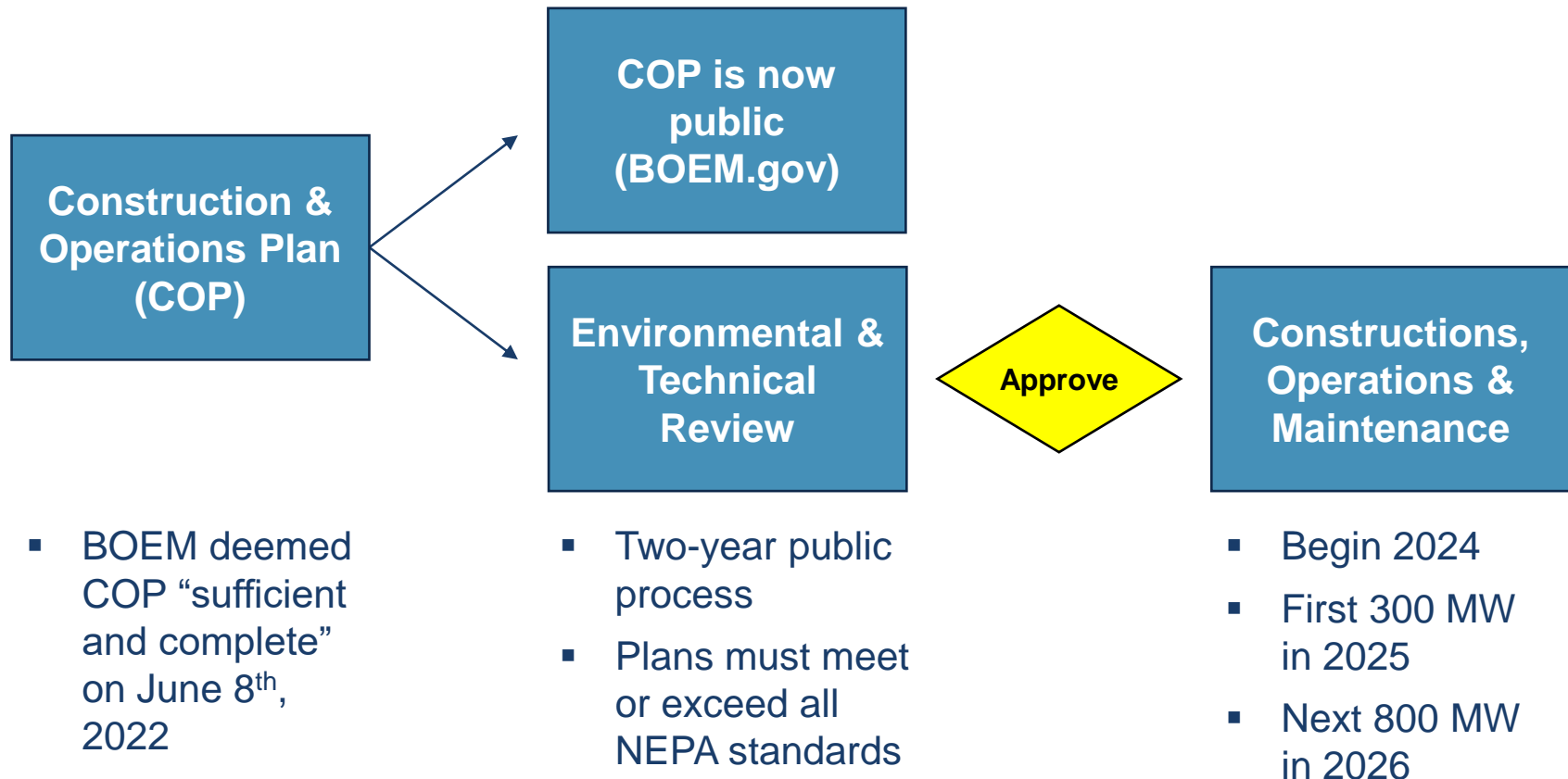
Landfall / Connection to the Grid



- Two potential landfall locations
 - Tower Road Beach
 - 3R's Beach
- 7 onshore export cable routes to 3 interconnection points to the grid
- Cables buried; no above ground infrastructure
- Horizontal Directional Drilling used to avoid disturbing beaches, dunes, and wetlands
- Preferred path is least disruptive



Next Steps



How Offshore Wind Benefits Delaware



Energy & Jobs

**Local
Investment**

**Address Coastal
Flooding**

Important Considerations



- US Wind has been studying the lease area since 2014
 - Able to develop and operate safely with negligible to no negative impacts on local ecosystems
 - Significant ecosystem benefits over long term
- Offshore wind energy is very efficient – full lifecycle energy and carbon payback in ~ 7.5 months or less
- Offshore wind energy is affordable – US Wind’s momentum project to cost average MD ratepayer \$0.76 / month



Mike Dunmyer
Delaware Development Manager
m.dunmyer@uswindinc.com